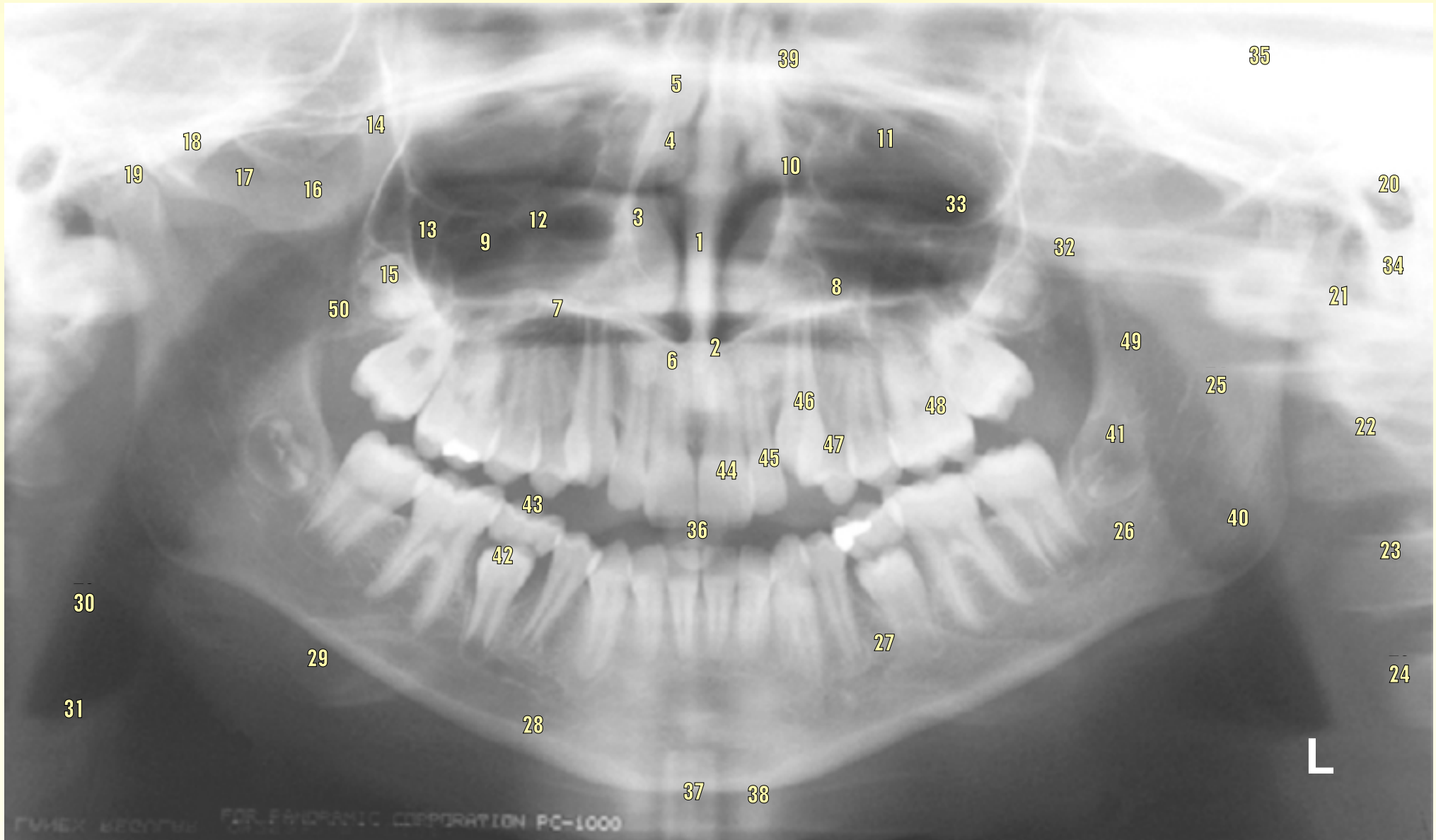


Interpreting A Panoramic Radiograph

Using Panoramic Corporation's PC-1000



“A normal panoramic radiograph contains a substantial amount of information. Above is a PC-1000 (Panoramic Corporation, Fort Wayne, Indiana) panoramic radiograph of a 12-year old male patient. Fifty distinct soft tissues, bony and dental landmarks have been labeled on this radiograph. When was the last time that you consciously and thoroughly inspected all of the structures that are demonstrated? As you probably are making the radiograph with the intent of dental diagnosis at the forefront, the dental arches should be left to last in your systematic evaluation of the image. You can approach the sequence of evaluation in many ways; however, it is very important to develop a consistent approach that ensures that all diagnostic information in the radiograph is indeed read.

I approach reading the radiograph roughly in the numerical sequence above, starting with the bony landmarks from the midline of the upper jaw and nasal cavity, then working back in the maxilla and zygomatic complex on each side. The soft tissue shadows of the tongue and soft palate are incorporated at this stage. This is followed by evaluation of the cervical spine and associated structures. I then evaluate the contents of the mandible starting from the midline and progressing posteriorly on each side. Any examination would be incomplete without a thorough evaluation of the soft tissues anterior to the spine and inferior to the mandible. The last part of the evaluation should be the area of chief complaint and the dental arches.”

Allan G. Farman, BDS, PhD, DSc, Professor of Radiology and Imaging Services, University of Louisville, in Vol. 1, Issue 1, 6/2001, Panoramic Imaging News. For a free sample copy of Panoramic Imaging News, call Panoramic Corporation at 800-654-2027.

1 Nasal Septum

- 2 Anterior Nasal Spine
- 3 Inferior Turbinate
- 4 Middle Turbinate
- 5 Superior Turbinate
- 6 Soft Tissue Shadow of the Nose
- 7 Airspace between Soft Tissue Shadow of Upper Border of Tongue & Hard Palate
- 8 Lateral Wall of Nasal Passage
- 9 Maxillary Sinus (Antrum)

10 Nasolacrimal Canal Orifice

- 11 Orbit
- 12 Infraorbital Canal
- 13 Zygomatic Process of the Maxilla
- 14 Pterygomaxillary Fissure
- 15 Maxillary Tuberosity with Developing Third Permanent Molar Tooth
- 16 Zygoma
- 17 Zygomatico – Temporal Suture
- 18 Articular Eminence of Temporal Bone
- 19 Mandibular Condyle

20 External Auditory Meatus

- 21 First Cervical Vertebra (Atlas)
- 22 Second Cervical Vertebra (Axis)
- 23 Third Cervical Vertebra
- 24 Fourth Cervical Vertebra
- 25 Mandibular Foramen and Lingula
- 26 Mandibular Canal
- 27 Mental Foramen
- 28 Inferior Border of Mandible
- 29 Hyoid

30 Pharyngeal Airspace

31 Epiglottis

- 32 Coronoid Process of Mandible
- 33 Inferior Orbital Rim
- 34 Mastoid Process
- 35 Middle Cranial Fossa
- 36 Biteblock for Patient Positioning During Panoramic Radiography
- 37 Chin Holder (Cephalostat)
- 38 Shadow of Cervical Spine
- 39 Ethmoid Sinus

40 Angle of Mandible

- 41 Crypt of Developing Mandibular Third Permanent Molar Tooth
- 42 Developing Mandibular Second Premolar Tooth
- 43 Primary Second Molar Tooth Showing Physiological Root Resorption
- 44 Maxillary Permanent Central Incisor Tooth
- 45 Maxillary Permanent Lateral Incisor Tooth
- 46 Maxillary Permanent Canine Tooth
- 47 Maxillary First Premolar Tooth
- 48 Maxillary Permanent First Molar Tooth
- 49 Ramus of Mandible

50 Pterygoid Plates



P a n o r a m i c C o r p o r a t i o n

4321 goshen road, fort wayne, in 46818
800.654.2027 260.489.2291 fax 260.489.5683
www.pancorp.com