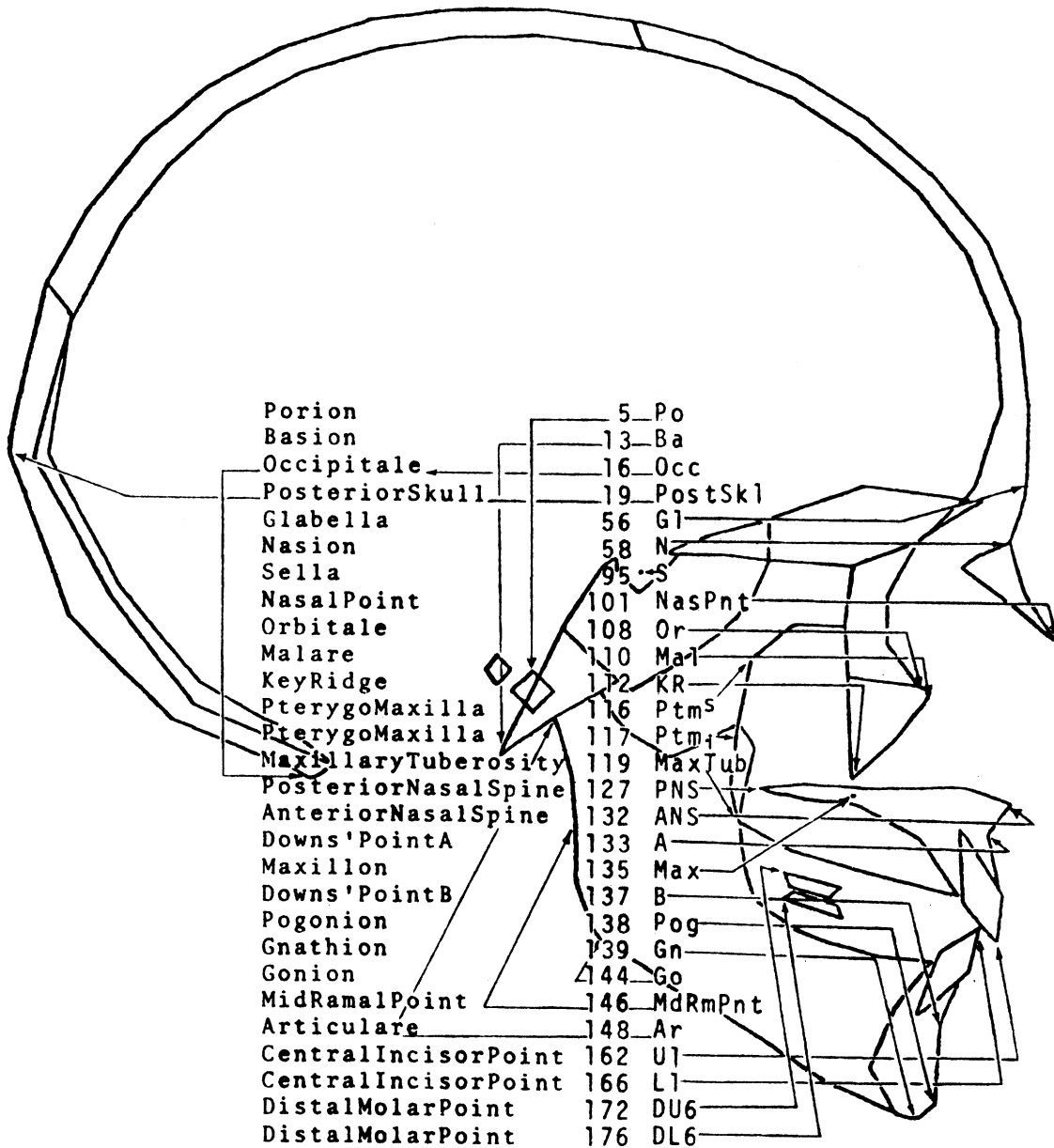


**Visual-Dx<sup>®</sup> Ceph**  
**Ted Rothstein, DDS, PhD**  
**Brooklyn, NY 11201**  
**(718) 852-1894 Fax**  
**E-mail: drted35@aol.com**



**Frontispiece of doctoral dissertation: Facial Morphology and Growth From Ten to Fourteen Years of Age in Children Presenting Class II, Division 1 Malocclusion**